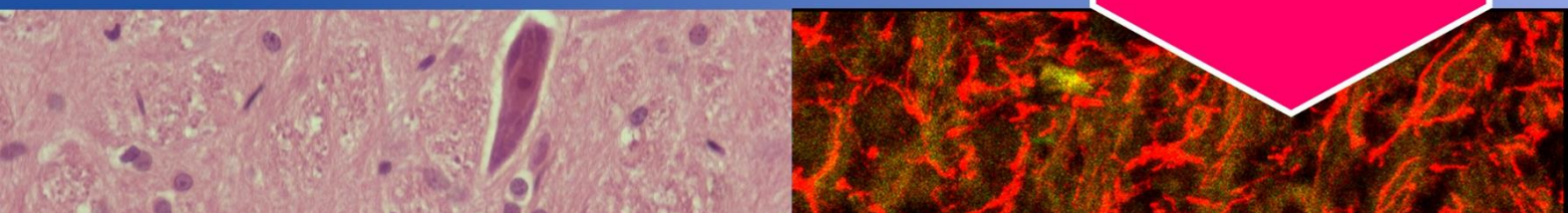




# 3<sup>rd</sup> European Society of Pathology *Academy*

8 – 11 May 2024  
Sliema, Malta

Final  
Programme





### Introduction:

The European Society of Pathology (ESP) is actively supporting the education and career development of Pathologists. One of the prestigious activities offered for this scope, is the organisation of the ESP Academy (ESPA).

ESPA is an intensive and interactive workshop, devoted to the promotion of applied and translational scientific research in the field of human pathology. ESPA is aimed for the future leaders in pathology and is organised every other year.

During this 4-day workshop, ESPA Awardees attend sessions provided by world-renowned experts and additionally present their own proposals for future research projects. Interactive discussions are strongly encouraged and attendance of all ESPA sessions and social events is mandatory. This ensures that the maximum educational benefit is achieved.

**In 2024, ESP is organising the 3<sup>rd</sup> edition of ESPA in Malta.**

The educational goals of ESPA are:

- Promotion of research excellence and innovation among young pathologists/scientists
- Provision of solutions for building up a research strategy and academic career to become a leader in pathology
- Receiving updates on the latest developments in the field of translational research in pathology
- Participation in a forum where experiences from world leading senior researchers in pathology as well as junior pathologists/scientists are shared
- Networking and early-career development support



## ESPA 2024 Organising/Scientific Committee

Name	Position in ESP
Peter Schirmacher	President
Raed Al Dieri	Director General
Janina Kulka	Secretary
Catarina Eloy	Chair of the Education Subcommittee
Christos Poullos	Education Manager

## ESPA 2024 Faculty

Name	Country
Raed Al Dieri	Belgium
Catarina Eloy	Portugal
Xavier Matias Guiu	Spain
Janina Kulka	Hungary
Marion L'Hote	Belgium
João Lobo	Portugal
Despina Moissidou	Malta
Christos Poullos	Belgium
Maria Rosaria Raspollini	Italy
Aleš Ryška	Czech Republic
Denis Schapiro	Germany
Peter Schirmacher	Germany
Dina Tiniakos	Greece/UK

The **ESP Academy 2024, Valletta, Malta 08/05/2024 - 11/05/2024** has been accredited by the European Accreditation Council for Continuing Medical Education (EACCME®) with **17.5** European CME credits (ECMEC®s). Each medical specialist should claim only those hours of credit that he/she actually spent in the educational activity. Through an agreement between the Union Européenne des Médecins Spécialistes and the American Medical Association, physicians may convert EACCME® credits to an equivalent number of *AMA PRA Category 1 Credits*. Information on the process to convert EACCME® credit to AMA credit can be found at [www.ama-assn.org/education/earn-credit-participation-international-activities](http://www.ama-assn.org/education/earn-credit-participation-international-activities).

Live educational activities, occurring outside of Canada, recognised by the UEMS-EACCME® for ECMEC®s are deemed to be Accredited Group Learning Activities (Section 1) as defined by the Maintenance of Certification Program of the Royal College of Physicians and Surgeons of Canada.





## Faculty short biographies

### Raed Al Dieri

Dr Raed Al Dieri studied Pharmacy at the University of Damascus (Pharm 1991) and earned his Master's degree in Laboratory Diagnosis in 1994 (MSc 1994). He earned his PhD degree at Maastricht University, Faculty of Medicine (in Coagulation, 2000) and trained as a biochemical coagulationist. He was a principal investigator in the medical biochemistry and pathophysiology of the coagulation system and the application of thrombin generation in fundamental and clinical settings (Maastricht University). He is a member of grant reviewing board for several organizations. He is a reviewer for several journals such as Blood, Journal of Thrombosis & Haemostasis, Thrombosis & Haemostasis, Thrombosis Research, and others. In 2005, he was appointed as a Research Director and in 2011 as Clinical Director at Synapse Research Institute, Cardiovascular Research Institute, Maastricht University, Netherlands. He co-promotes and supervises PhD programs and is a lecturer at Maastricht University. He has co-developed and co-invented several tests to measure the coagulation system in normal subjects and patients of cardiovascular diseases, thrombotic events and patients with bleeding disorders.



In 2015, he was appointed as Scientific Director and later in 2017 as Director-General at the European Society of Pathology (ESP), Brussels, Belgium. Besides, he is the Operational Director of the ESP Foundation.

### Catarina Eloy

Professor Catarina Eloy is a Portuguese interventional pathologist, researcher, and teacher devoted to the diagnosis and study of thyroid cancer. She graduated as pathologist in 2011, completed her PhD thesis on papillary thyroid carcinoma in 2012 by the Medical Faculty of Porto University, is Affiliated Professor of the Medical Faculty of Porto University since 2015 and published more than 100 manuscripts in indexed scientific journals. She is the Head of the fully digital Pathology Laboratory of Ipatimup, Porto, since 2013 and developed special interest in the modernization of the diagnostic processes, including digital and computational pathology. She is member of the European Society of Pathology (ESP) since 2010, chair of the Educational Subcommittee since 2023, member of the Council since 2023, member of the Advisory Board since 2022, member of the Editorial Board of Virchows Archiv since 2022, coordinator of the ESP - Training Centre for Digital Pathology at IPATIMUP since 2022 and was co-chair of the Endocrine working group from 2018 to 2022. She is Vice-President of the Portuguese Society of Pathology, member of the Endocrine Pathology Society since 2023 and was President of the European Society of Digital and Integrative Pathology (2020-2022).





### **Xavier Matias-Guiu**

Xavier Matias-Guiu, M.D., Ph.D. is Professor of Pathology at the University of Barcelona (2019-) and Lleida (2002-), and chairman of Pathology in Hospital Universitari de Bellvitge, Barcelona (2015-), and Hospital Universitari Arnau de Vilanova, Lleida (2002-). Research is focused on clinicopathologic features and molecular genetics of gynaecological cancer. Past-President, Sociedad Española de Anatomía Patológica (2019-21); Member of the Council (2015-19) and chairman of the Education subcommittee of European Society of Pathology (2021-2023). He is currently the President-Elect of the European Society of Pathology. Member of the Executive committee (2009-2013), and President (2021-23) of the International Society of Gynecologic Pathologists (ISGYP); Member, and Editor in the WHO Classifications of Tumours of the Female Genital Tract, (2014 and 2020), team member in the ESMO-ESGO-ESTRO Consensus Conference on Endometrial carcinoma (EC) (2016), and the ISGYP guidelines on EC (2019), co-chairman in the ESGO/ESTRO/ESP guidelines for the management of patients with EC (2020), chairman in the ICCR Dataset for the reporting of EC (2021), member of the FIGO Endometrial Cancer Staging Subcommittee (2021-), and co-chairman in the ESMO-ESGO-ESP guidelines on Ovarian Cancer (2021-2022).



### **Janina Kulka**

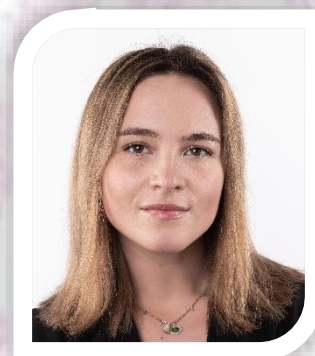
Professor Kulka has graduated in 1982 at the Semmelweis University, Budapest, Hungary. She has been working since then in the 2nd Department of Pathology of the same university. Between 1992-94 she was a research fellow in the Regional Breast Pathology Unit of the University of Bristol (UK). During the establishment of the national mammographic screening programme, she was member of the Professional Committee for breast cancer screening, of the „For a Healthy Nation” Programme in Hungary. Recently she took part in the development of two new ICCR Breast Cancer Datasets as member of the Development Committee. She is member of several Hungarian professional organisations and had been serving the Hungarian Society of Pathology as secretary (2005-2009) and president (2010-2012). She has been president of the IAP Hungarian Division from 2016 and she serves the European Society of Pathology as secretary since last year. Her research activity has been focused on breast cancer.





### Marion L'Hote

Marion L'Hote holds a dual degree in European politics from King's College London and Sciences Po Paris, as well as a master's in European Governance and Politics from the College of Europe, where her master's thesis investigated European mental health policymaking. After an experience at the European Commission with the principal advisor for health crises for the directorate general for health and food safety (DG SANTE), she joined the European Cancer Organisation as a Policy Officer. Working on survivorship and quality of life advocacy, as well as on the pharmaceutical legislation, she also takes an active role in various EU funded and co-funded projects, focusing particularly on policy outreach.



### João Lobo

Dr Lobo is a Pathologist at the Portuguese Oncology Institute of Porto (IPO Porto), with interest in Uro pathology and Molecular Pathology. João obtained his PhD (with European Doctorate title) in Pathology and Molecular Genetics by ICBAS School of Medicine and Biomedical Sciences - University of Porto (2017-2021), with a project focused on testicular germ cell tumors. He stayed one year at the Princess Máxima Center in Utrecht working on microRNA and DNA methylation studies in liquid biopsies under supervision of Prof. Leendert Looijenga. João did a Uro pathology observership at the University Hospital of Zurich under supervision of Prof. Holger Moch (2021), and at the University of Alabama at Birmingham, USA, under supervision of Prof. George Netto and Prof. Cristina Magi-Galluzzi (2023).

He became an Attending in Pathology in March 2024. He is a Junior Researcher at the Cancer Biology and Epigenetics Group of IPO Porto, with interest in urological cancers, biomarkers and liquid biopsies. João is also a Lecturer in Pathology for the Master Degree in Medicine and Master Degree in Dental Medicine, University of Porto (ICBAS-UP and FMDUP). He is member of the Young Academic Urologists – Penile and Testis Cancer Group (YAU/EAU), and of the Malignant Germ Cell International Consortium (MaGIC; vice-Chair of the Young Investigator Sub-Committee, member of the Pathology Sub-Committee).

He is a member of the ESP Alumni and an awardee of the 1<sup>st</sup> ESP Academy in 2018.

He is author/co-author of 117 original articles (57 first author, 5 senior author).





### Despina Moissidou

Dr Despina Moissidou is a Senior Lecturer in Medical Sciences, and Head of Histology/Histopathology in the pre-clinical years of the MBBS medical programme of Queen Mary University of London in Malta Campus. Her expertise lies in histology, basic pathology, laboratory medicine and biological/forensic anthropology. Her main research interest involves both ancient and modern tissue pathology and paleopathology through laboratory and histological techniques, she has led laboratory research projects especially on ancient human remains. Other interests include the enhancement of histology curriculum in medical education, which is currently in collaboration with Barts Hospital and the NHS Learning Hub.

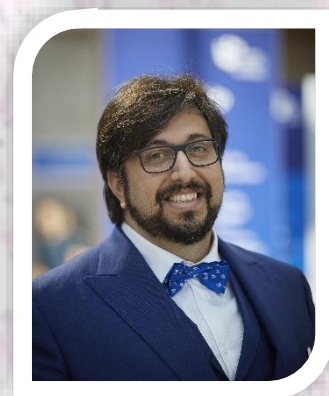
She is a Senior Fellow of Higher Education Academy (SFHEA), Fellow of the Institute of Biomedical Science UK, Member of the European Society of Pathology and the American Association for Anatomy, and a UK trained Crime Scene Investigator (CSI).



### Christos Poullos

Dr Christos Poullos is a Pathologist, having completed his residency and PhD studies at the Medical School of the Aristotle University of Thessaloniki in Greece. Additionally, he has obtained a Master on Nanosciences and Nanotechnologies at the Department of Physics at the Aristotle University of Thessaloniki in Greece. He is currently enrolled in the European Master Molecular Pathology, under the coordination of the Université Côte d'Azur in Nice, France. He is an ESP Alumni, having been awarded the Giordano Fellowship (2017 edition) and being a member of the 1st ESP Academy in 2018.

After working as a Junior Consultant at the AHEPA University Hospital of Thessaloniki, Greece, he was appointed in 2020 the Education Manager of the European Society of Pathology (ESP) in Brussels, Belgium. His current work involves the coordination of the Educational Activities of ESP. He is member of the Steering Committee of the Young Cancer Professionals of the European Cancer Organisation.





### **Maria Rosaria Raspollini**

Maria Rosaria Raspollini is senior staff pathologist at the Department of Histopathology and Molecular Diagnostics at the University Hospital Careggi, Florence, Italy.

She is professor and tutor in pathology at the post-graduate School of Urology, University of Florence, Medical School. She has graduated from the University of Florence Medical School, where she performed her residency training.

Her main research themes are Uro pathology and Gynaecopathology, biomarkers in oncology.

She is editorial board member for the upcoming 5th Edition of Urinary and Male Genital Tumours of the WHO Classification.

She is active member in multiple professional scientific organisations and participates in joined guideline committees.

She is past Chair of the Gynaecopathology WG of ESP, past council member of ESP and current ESP Treasurer.



### **Aleš Ryška**

Professor Aleš Ryška Graduated at the Charles University, Medical Faculty in Hradec Králové, Czech Republic (MD - 1994), Ph.D. in pathology (2001), board certification in pathology (2000). Working at The Fingerland Department of Pathology, Charles University Medical Faculty in Hradec Králové, Czech Republic (full Professor of Pathology - 2007). Currently chair of the department. Member of several scientific societies and editorial boards. Past President of the European Society of Pathology (2021-2023). Current Chair of the ESP Working Groups. Chair of the Local Organizing Committee of the 24th European Congress of Pathology in Prague (2012) and of the Local Organizing Committee of the 5th Pannonia Congress of Pathology (2018).

Interested namely in diagnostics of lesions of the breast, thyroid and salivary glands - cytology, histology and special methods, such as immunohistochemistry, molecular biology, etc. as well as in predictive pathology (detection of markers predicting response to targeted therapy) and quality control in pathology. Author of 200 peer-reviewed papers and multiple book chapters.





### Denis Schapiro

Dr Denis Schapiro is a Research Group Leader at the Heidelberg University Hospital focusing on spatial omics technologies and analysis.

Before moving to Heidelberg, he was an Independent Fellow at the Laboratory of Systems Pharmacology at Harvard Medical School and the Klarman Cell Observatory at the Broad Institute where he was a Damon Runyon Quantitative Biology Fellow mentored by Professor Peter Sorger and Professor Aviv Regev. He obtained his PhD from the University of Zurich and ETH Zurich in the laboratory of Prof. Bernd Bodenmiller where he worked on Imaging Mass Cytometry and corresponding analysis tools focusing on highly multiplexed image analysis.



### Peter Schirmacher

Professor Peter Schirmacher is director of the Institute of Pathology (IPH) of Heidelberg University (Germany) since 2004 and the ESP President. He studied Medicine at Mainz University (Germany) and Molecular Biology at Albert Einstein College, New York, received training and board certification in Pathology and Molecular Pathology at Mainz University and was Professor of Pathology at Cologne University. He is board member of the National Centre of Tumor Diseases and Principal Investigator in many national and international consortia.

He is past Chairman of the German Society of Pathology, past Council Member and past Education Subcommittee Chair of ESP. His scientific interest centres on liver and molecular pathology with specific emphasis on molecular pathogenesis of hepatobiliary cancer. IPH is an ESP-ATC for Liver and Molecular Pathology.





### **Dina Tiniakos**

Dina Tiniakos is Professor of Pathology & Director, Dept of Pathology, Aretaieion Hospital, Medical School, National & Kapodistrian University of Athens, Greece and academic hepatopathologist at the Translational and Clinical Research Institute, Faculty of Medical Sciences, Newcastle University, UK. She is Past President of the European Society of Pathology (2019-2021) and Chair, Equality & Diversity Taskforce, United European Gastroenterology. She the current Chair of the ESP Advisory Board.

Her main research interests include fatty and autoimmune liver disease and hepatocarcinogenesis and co-leads several European consortia on liver pathology. She is also central pathologist in major international clinical trials for non-alcoholic steatohepatitis.

She is currently Associate Editor of “Histopathology” and Editorial Board member of “Journal of Hepatology” and “Annals of Gastroenterology”.





# Congratulations

to this year's **ESP Academy** Awardees!



Zineb Belcaid  
Netherlands



Ceren Boyaci  
Sweden



Marcin Braun  
Poland



Anne-Cécile Brunac  
France



Gerardo Cazzato  
Italy



Michelle Ceci  
Malta



Rui Jorge Gonçalves de Almeida  
Portugal



João Gama  
Portugal



Alessandro Gambella  
Italy



Martina Haberecker  
Switzerland



Katherine Hewitt  
Germany



Seokhwi Kim  
South Korea



Ildiko Krencz  
Hungary



Nuno Jorge Lamas  
Portugal



Živa Ledinek  
Slovenia



Emilian-Gheorghe Olteanu  
Romania



Federica Pezzuto  
Italy



Ignacio Ruz-Caracul  
Spain



Wiebke Solass  
Switzerland



Pierre Alain Thiébaud  
France



Lisa Vermij  
Netherlands



Philipp Zens  
Switzerland





ESPA 2024 Scientific Programme

Wednesday 8 May		Thursday 9 May	
Arrivals	7.00 - 8.30	Breakfast	
	8.30-9.00	The interventional pathologist, Catarina Eloy	
	9.00-9.30	Unlocking the Potential of AI for Biomarker Prediction in Pathology: Bridging the Digital Divide, Emilian-Gheorghe Olteanu	
	9.30-10.00	Artificial Intelligence-Driven Algorithm: Prediction of BRCA1 and BRCA2 Pathogenic Variants and Characterization of the Tumor Microenvironment in Cancer Specimens, Rui Jorge Gonçalves de Almeida	
	10.00-10.30	Biobanking, Peter Schirmacher	
	10.30 - 11.00	Coffee break	
	11.00-11.30	Towards a personalized therapy of peritoneal metastasis, Wiebke Solass	
	11.30-12.00	Impact of p53 status of esogastric adenocarcinoma on pathological response to neoadjuvant treatment, Anne-Cécile Brunac	
	12.00-13.00	Controlling hematoxylin-eosin: the ultimate challenge, Aleš Ryška	
	13.00 - 14.00	Lunch with Faculty	
Team building event, Christos Poullos	14.00-14.30	Career development: becoming a Leader in Pathology, Peter Schirmacher	
	14.30-15.30	Hormone receptor expression of cancer associated fibroblasts in breast cancer, Ceren Boyaci	
	15.30-16.00	Prognostic Biomarkers and Early Detection Strategies for Breast Cancer Metastatic Disease, Michelle Ceci	
	16.00 - 16.30	Development of an Artificial Intelligence-Powered HER2 Analyzer for Therapeutic Applications, Seokhwi Kim	
	16.30-17.00	Repurposing the use of ER immunohistochemistry: diagnostic and prognostic considerations in NSMP endometrial cancers, Lisa Vermij	
	17.00-18.00	Do not give up your research dreams, Janina Kulka	
	18.00-19.00	Key Note Lecture: Novel Imaging Techniques, Denis Schapiro	
	19.00	walk to restaurant	
	19.30 - 22.30	Dinner with Faculty	
	20.00 - 22.30	Dinner with Faculty	

ESPA 2024 Scientific Programme

Friday 10 May			Saturday 11 May			
7.00 - 8.30		Breakfast	7.00 - 8.00		Breakfast & Check-out	
	8.30-9.00	Surveilling biomarkers testing, Aleš Ryška		8.00-9.00	Report from Break-out groups to the whole group. Presented by 1 Junior from each Break-out group	
	9.00-10.00	A potential new predictive biomarker for immunotherapy in NSCLC, Martina Haberecker		9.00-9.30	Identifying the histomorphological features that differentiate IDH-wildtype and IDH-mutant high grade gliomas using deep learning, Katherine Hewitt	
		ENLIGHTEN: Exploring Novel Links between Genetic alterations and THE immunological Network in EGFR-mutated NSCLC. Beyond personalized medicine, Federica Pezzuto			Gene expression profiling in high-grade versus low-grade medullary thyroid carcinomas to identify prognostic factors, Ignacio Ruz-Caracuel	
		Metabolic heterogeneity and plasticity in small cell lung carcinoma: the effect of spatiotemporal evolution and phenotype transition on tumor cell metabolism, Ildiko Krencz			Development of a pathological multifactorial prognostic panel for prediction of efficacy of anti-FGFR therapy in hormone-sensitive tumors, Marcin Braun	
		PD1/PDL1 interaction as a prognostic factor of survival in immunotherapy-treated operated NSCLC patients : a pilot study, Pierre Alain Thiébaud			Characterization of the immune-inflammatory tumor microenvironment (TME) of cutaneous squamous cell carcinoma (cSCC) and role of Tumor Infiltrating Lymphocytes (TILs) during tumor progression, Gerardo Cazzato	
10.00-10.30	Creating cancer guidelines: the recent experience from ESP, Maria Rosaria Raspollini	9.30-10.00				
10.30 - 11.00		Coffee break		10.00-10.30	Advocating for Cancer policy making (pathology point of view), Marion L'Hote	
	11.00-11.30	The puzzle of lung adenocarcinoma brain metastases – unravelling their molecular heterogeneity, Philipp Zens				
		The immunogenomic landscape of brain metastases, Zineb Belcaid	10.30 - 11.00		Coffee break	
	11.30-12.45	Break-out session:1) Research with limited resources (J. Kulka) 2) Interaction with clinicians multiprofessional collaboration (D. Tiniakos) 3) Grant Writing (P. Schirmacher) 4) How to set-up a digital pathology laboratory (C. Eloy)		11.00-11.30	Clinical trials versus real world data, Xavier Matias Guiu	
				11.30-12.00	Facilitating effective communication and scientific collaboration between pathologists and laboratory biomedical scientists, Despina Moissidou	
12.45 - 13.30		Lunch with Faculty		12.00-12.30	The importance of mentoring, Dina Tiniakos	
Social activity and dinner with Faculty				12.30-13.00	Translational research, Maria Rosaria Raspollini	
				13.00-13.30	What ESP has to offer to early-career pathologists, Raed Al Dieri	
				13.30-13.45	Concluding remarks (All Faculty)	
			13.45 - 15.00		Light lunch & Departure	
				Break out rooms	4 Subjects/Groups	
					European Society of Pathology (3)	
					Keynote Lecture (2)	
				Invited Speakers	Scientific Topic (7)	
					General Topic (7)	
				selected participant	Research Project Presentation from Juniors (22)	





Contact Details  
European Society of Pathology  
Square de Meeûs 18, 1000, Brussels, Belgium  
[www.esp-pathology.org](http://www.esp-pathology.org)  
[admin@esp-pathology.org](mailto:admin@esp-pathology.org)

