

European School of Pathology (EScoP) course for Thyroid Pathology



Venue: [Mona Plaza Hotel](#)

Address: Cara Uroša 62-64, Beograd 11000, Serbia

Dates: 13-15 November 2025

Faculty:

Prof. Manuel Sobrinho Simões, Portugal

Prof. Aleš Ryška, Czech Republic

Prof. Catarina Eloy, Portugal

Prof. Giovanni Tallini, Italy

Attendance: This course is with on-site attendance only and will not be recorded

Course language: The course will be provided in English



Registration fees:

For the course programme only*:

ESP members (with active membership for 2025): **290 Euro**

Non-ESP members: **330 Euro**

For both the course programme and the social event (networking buffet dinner at the course venue):

ESP members (with active membership for 2025): **325 Euro**

Non-ESP members: **360 Euro**

There is no option for on-site registrations/payments.

The available slots will be allocated on a first-come, first-served basis.

Deadline to register: **27 October 2025**

*Registration for the course programme includes access to the course venue, coffee breaks and lunches, access to the online platform with the course material and a personalised certificate of attendance.

For any questions, contact the ESP HQ, at admin@esp-pathology.org having as email subject “**ESCoP Belgrade 2025**”.

Learning Objectives:

This course will be an introduction to the subspecialty of Thyroid Pathology. The programme includes both theory lectures and real-life examples provided via slide seminars. Participants will learn about neoplasms of the Thyroid, as well as common non-neoplastic diseases. Additionally, there will be a session for Parathyroid glands. For each session there will be sufficient time for discussion, resulting to an interactive course.

Target Audience:

The course is designed for Pathologists at the beginning of the subspecialty training. However, Pathologists at all levels of experience, from residents to established experts, are welcome to register.

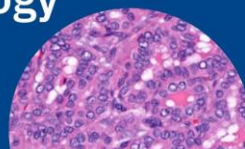
The registration is open additionally to clinical colleagues (e.g. Endocrinologists, Oncologists, Radiologists), Laboratory Scientists, Technicians, Nurses, and any Healthcare Professional and Scientists whose work includes Thyroid Pathology.

Bring your case Session:

Course participants are welcome to submit cases of Thyroid or Parathyroid Pathology to be discussed during the slide seminar sessions. All cases have to be submitted in advance of the course. The deadline to do is **27 October 2025**. For more information about case submission, please contact Dr Christos Poullos c.poullos@esp-pathology.org after successful registration. NB: case presentation from participants does not include a separate certificate.

ESCoP Course on Thyroid Pathology

13 – 15 November 2025
Belgrade, Serbia



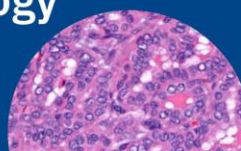
Preliminary Course Programme

All times are for local time in Belgrade, Serbia

| Day 1 - 13 November 2025 | | |
|--------------------------|---------------|---|
| Time | Duration(min) | Topic |
| 08:00 | 45 | Arrivals and registrations |
| 09:00 | 30 | Introduction to the course (Poulios) |
| 09:30 | 90 | Session 1: Fine needle aspiration of the thyroid (Eloy), 20 min lecture Cytology of the thyroid nodule (Ryška), 20 min lecture Case discussion (All), 40 min to discuss 8 cases (Eloy, Ryška) Q&A, 10 min |
| 11:00 | 30 | Coffee Break |
| 11:30 | 90 | Session 2: Development abnormalities and inflammatory conditions (including iatrogenic causes) (Ryška), 20 min lecture Case discussion (All), 60 minutes to discuss 6 cases (Ryška, Eloy) Q&A, 10 min |
| 13:00 | 60 | Lunch Break |
| 14:00 | 30 | Slide Seminar 1 (including cases by the participants) |
| 14:30 | 90 | Session 3: Well-differentiated follicular cell derived tumours (from follicular nodular disease to carcinoma) (Simões), 20 min lecture Low-risk thyroid neoplasms: NIFTP and UMP (Tallini), 20 min lecture Case discussion (All), 40 min to discuss 4 cases (Simões, Tallini) Q&A, 10 min |
| 16:00 | 30 | Coffee Break |
| 16:30 | 60 | Slide Seminar 2 (including cases by the participants) |
| 17:30 | 30 | Summary of the day (short summary of the talks and take-home messages) |

EScOP Course on Thyroid Pathology

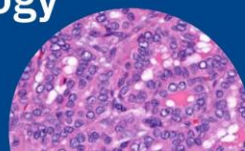
13 – 15 November 2025
 Belgrade, Serbia



| Day 2 -14 November 2023 | | |
|-------------------------|---------------|---|
| Time | Duration(min) | Topic |
| 09:00 | 90 | Session 4: Papillary thyroid carcinoma subtypes (Simões), 20 min lecture Oncocytic cell tumours (Tallini), 20 min lecture Case discussion (All), 40 min to discuss 4 cases (Simões, Tallini) Q&A, 10 min |
| 10:30 | 30 | Coffee Break |
| 11:00 | 90 | Session 5: Non anaplastic, high grade follicular-derived carcinomas (including PDTC) (Simões), 20 min lecture Case discussion (All), 60 minutes to discuss 6 cases (Simões, Ryška) Q&A, 10 min |
| 12:30 | 30 | Slide Seminar 3 (including cases by the participants) |
| 13:00 | 60 | Lunch Break |
| 14:00 | 90 | Session 6: Anaplastic carcinoma differential diagnosis (including metastasis, vascular neoplasms, lymphoma, thymus carcinoma) (Eloy), 20 min lecture Case discussion (All), 60 minutes to discuss 6 cases (Eloy, Ryška) Q&A, 10 min |
| 15:30 | 30 | Coffee Break |
| 16:00 | 90 | Session 7: Tumours with unusual and/or uncertain histogenesis and phenotype (Salivary gland-type, SMEC, MEC, Cribriform TC, Thymus tumours, mesenchymal lesions) (Eloy), 20 min lecture The small cell phenotype (CEFTE, thyroblastoma, others with small cells)(Eloy), 20 min lecture Case discussion (All), 40 minutes to discuss 4 cases (Eloy, Ryška) Q&A, 10 min |
| 17:30 | 30 | Summary of the day (short summary of the talks and take-home messages) |
| 20:00 | 120 | Social event: Welcome reception and buffet dinner (mandatory in advance registration) |

EScoP Course on Thyroid Pathology

13 – 15 November 2025
Belgrade, Serbia



| Day 3 - 15 November 2023 | | |
|--------------------------|---------------|---|
| Time | Duration(min) | Topic |
| 08:30 | 90 | Session 8: Medullary carcinoma (including mixed carcinomas and atypical MTC and paraganglioma) (Ryška), 20 min lecture Case discussion (All), 60 minutes to discuss 6 cases (Tallini, Ryška) Q&A, 10 min |
| 10:00 | 30 | Slide Seminar 4 (including cases by the participants) |
| 10:30 | 30 | Coffee Break |
| 11:00 | 60 | Session 9: Parathyroid pathology (Tallini), 20 min lecture Case discussion (All), 30 minutes to discuss 6 cases (Ryška, Tallini) Q&A, 10 min |
| 12:00 | 30 | Summary and end of the Course. |

ESP has applied for the CME accreditation of this course.

ESCoP Course on Thyroid Pathology

13 – 15 November 2025
Belgrade, Serbia

