

## Professional supervision

European Society of Pathology Quality Assurance Foundation  
Barastraat 6, 1070 Brussels, Belgium  
[www.esp-pathology.org](http://www.esp-pathology.org)

## EQA provider

SEKK s.r.o.  
Arnosta z Pardubic 2605, 530 02 Pardubice  
Czech Republic  
[www.sekk.cz](http://www.sekk.cz)

## Programme description

The programme is focused on external quality assessment of the PD-L1 staining of 4 types of tumours (subschemes):

- TNBC (triple-negative breast carcinoma)
- NSCLC (non-small cell lung cancer)
- UC (urothelial carcinoma)
- HNSCC (head and neck squamous cell carcinoma)

## Programme homepage

The homepage of the PDL1 programme, which collects all information belonging to this programme in one place, is:

[www.sekk.cz/PDL1](http://www.sekk.cz/PDL1)

## Schedule

The programme is organised in 2 rounds:

- round 1 starts on May 2, 2023
- round 2 starts on October 2, 2023

Participation in both rounds is required. The application deadline is February 28, 2023.

In each round the participants have 3 weeks to analyse the samples.

## Samples

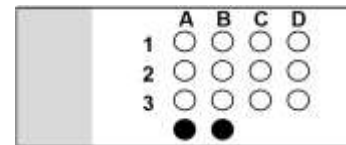
Each tumour type (subscheme) is represented by an individual set of samples. The participants are free to order any combination of sample sets (subschemes).

One sample set contains 1 physical slide and 1 virtual slide.

Each slide is made from a TMA block containing FFPE samples (unstained for the physical slide and PD-L1stained for the virtual slide) made of 4 primary samples.

The TMA of the physical slide contains 3 cores for each primary sample. The picture shows the principal layout of the TMA slide where the

columns A to D represent primary samples (tumours) and black cores tonsillar tissue:



## Annual fee

The annual fee that covers complete services (participation in 2 rounds, samples, transport of the samples to the participant's laboratory, evaluation) depends on the number of subschemes ordered by the participant. In case of one subscheme ordered it is 230 EUR, the maximum order (4 subschemes) costs 560 EUR.

## Assigned values

The results that are expected to be found by the participants (assigned values) are determined by the consensus of the participants.

## Evaluation and reports

Each round and subscheme is evaluated separately and independently. The output of the evaluation process consists of 2 parts:

- Public summary (statistics and supervisor's comment) freely available to everybody.
- Individual (private) reports for each participant.

Please find examples at the PDL1 programme homepage.

## How to participate

A step-by-step guide on how to register and order online is available here:

[http://www.sekk.cz/eqa/2023\\_how\\_to\\_order.pdf](http://www.sekk.cz/eqa/2023_how_to_order.pdf)

## Contacts

Feel free to contact us if you have any questions or requests at [sekk@sekk.cz](mailto:sekk@sekk.cz)