

Minutes of the WG 'Pathology in favour of developing countries' business meeting held on December 13, 2021

AGENDA

Pathology in favour of developing countries Working Group Business Meeting
13th December 2021
Giulia De Falco

1. Introduction and welcome to attendees
2. Status quo
3. Election of new Chair and Co-chair of the WG
 - i. Executive instructions for elections
 - ii. List of all nominees
 - iii. Nominees to introduce themselves (name, institute, speciality, current position, and their **perspective**)
 - iv. Election of Chair and co-Chair of the WG
4. Scientific program for ECP Basel 2022
5. AOB

MINUTES

Attendance:

Dr. Raed Al Dieri introduced the co-Chair/acting Chair of the WG, Giulia De Falco, who then chaired the meeting from 13:00 to 16:20 GMT. First of all, it was confirmed that the meeting met the quorum, before continuing.

Giulia delivered a PowerPoint presentation covering the agenda items above and summarising the history, aims and future perspectives of the WG. Slides of the meeting can be found at the end of this document.

Giulia summarised the items, there was a lively discussion at the end of the meeting with some of the participants.

Working group status

Giulia summarised the history of the WG and the main milestones achieved in the 11 years of activity. There are currently 63 members from a wide range of European and non-European countries, but the aim is to expand this WG further and to pro-actively engage all members in its activities.

Activities

Giulia provided an overview of the session organised with the Polish National Society of Pathology held during the 34th ECP in August 2021, which welcomed speakers from Poland, China and Tanzania. In addition, she provided an overview of future activities planned, including three joint sessions to be held during the 35th ECP in Basel in September 2022.

1. Joint Short Course - Pathology in Favour of Developing Countries & Infectious Diseases & Molecular Pathology WGs Topic: COVID 19 in developing countries – another face of the pandemic. Sunday, September 4th Afternoon session, 14:45 - 16:45
 2. Joint Symposium - Pathology in Favour of Developing Countries & Molecular Pathology WGs Topic: Molecular pathology on a budget. Wednesday, September 7th 08:30 - 12:00 (09:30-10:30 - Coffee break & Posters)
 3. Joint Symposium: Pathology in Favour of Developing Countries & IT (Computational) WGs Topic: Joining forces! Improving diagnostic accuracy by telepathology. Wednesday, September 7th 14:00 - 16:00
- Additional details of these sessions, aims and activities of the WG are provided in the slides below.

Collaboration with other groups

The WG is currently collaborating with the IT (Computational), the Molecular Pathology and the Infectious diseases WGs, with whom joint sessions/short courses will be delivered at next ECP. The aim is to continue and expand the current collaborations.

The WG has also started discussions to collaborate with the UK Health Security Agency (Formerly Public Health England) to provide access to a wide range of educational activities.

Election of a new Chair and co-Chair of the WG

Two nominations were received to fill these positions. Giulia De Falco applied to become the new Chair and Katharina Wassilew agreed to change her original submission to become the new co-Chair of the WG. After a brief introduction about the candidates and their perspective, participants were asked to approve these nominations. There were no objections so the assembly elected Giulia De Falco as Chair and Katharina Wassilew as co-Chair of the WG. Raed Al Dieri and the ESP President, Prof. Ales Ryska, congratulated the candidates on their election and reinforced that ESP is happy to provide help, if needed. Ales also thanked Giulia for having taken onboard leadership of the WG in the absence of a Chair in the past year, and for the organisation of the session in the last ECP, which was very successful.

Discussion

Raed Al Dieri provided a clarification about the aims of the WG, which is to support pathologists working in underdeserved countries, specifying that this does not involve any agreement on funding programmes with any institutes worldwide, explaining that funding is not under the umbrella of ESP activities. This also includes not providing support in terms of material, diagnostic tools, unless this will come from a donation. The second clarification was about the membership fee with regards to residents, who can benefit of a no-fee membership, and clarified that the maximum amount paid by members is 50 euros, thus addressing concerns previously raised by Katharina with regard to these matters. Raed also reinforced that all WG members should work according to the aims and the mission of ESP. Ales Ryska further commented on some resources available at ESP, like the Giordano Fellowship or the European Schools of Pathology, to support pathologists in countries not economically wealthy. The mission of ESP is to help to reach equal quality of diagnostic service, teaching and research across Europe.

Katharina raised an issue related to only being able to be member of up to three WGs, as she would like to be involved in more. Raed said that this point had already been raised and discussed several years ago and explained that should not be seen as a restriction, but as a way to remain focussed on the aims and activities of the WGs members choose to belong to in order to really make a contribution. Also, Raed explained that it is no longer possible to access info of the members of the WG for privacy issue, since the introduction of the new GDPR policy. Ales also clarified that even not being a member of a specific WG does not prevent people from participating in activities organised by other WGs. Katharina also raised another point regarding the absence of a representative of this WG in the Educational sub-committee.

AOB

Katharina raised a concern about the name of the WG and suggested that a better name could be chosen to prevent people from feeling offended or discriminated. Suggestions were made about changing the name of the WG more in line with a sustainable pathology. Stefano Guzzetti then added that sustainability may embed not only developing countries, but all countries with limited resources. Prof. Janina Kulka shared her view about using the word 'sustainability', which seems currently to refer to being 'eco-friendly' rather than affordable, and this might lead to misunderstandings. Dr. Kisumu Adoke from Nigeria clarified that people from African countries do believe in the meaning of developing countries and thinks that the current name fits very well with the aims of the WG. Kisumu also raised the issue of the registration fee to ECP congresses stopping some participants from Africa from attending these meetings. Also, he suggested to pro-actively involve members from Africa as co-Chair to give them a better sense of belonging. He also suggested to have regular meetings to give members the opportunity of sharing their views about the WG, which can be done at the end of the year. Giulia thanked Kisumu for his suggestions and clarified that all members can contribute and input in the activities of the WG, thus inviting him to feel free to be proactively involved. Dr. Mahomed Dada intervened to say that the name 'developing countries' may not be perceived in a nice way as it might remind about past history of colonialism, based on his experience as a South-African native.

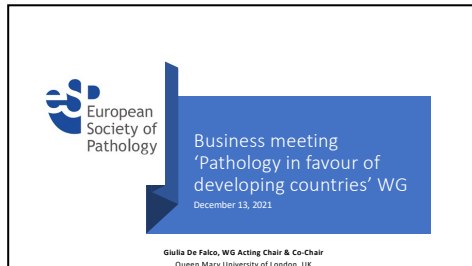
Raed clarified that the ESP periodically reviews the scope and the activities of every WG. The business meeting is the best platform to agree on proposals to change name or scope of a WG and these will be submitted to the Council of ESP. Changes will then need to be approved by the General Assembly.

Conclusions

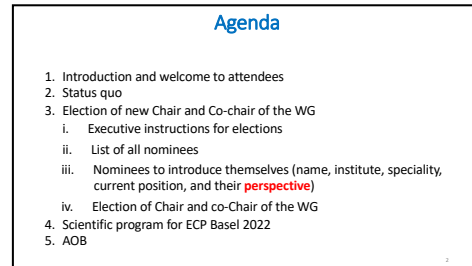
Giulia thanked the participants and ESP for the continuous support provided during the last year. In particular, she thanked Sarah for the outstanding support and guidance, Stefano Guzzetti as former Chair to have led the WG until then, and ended the meeting with good wishes for all participants.

SLIDES OF THE MEETING

1/11/22



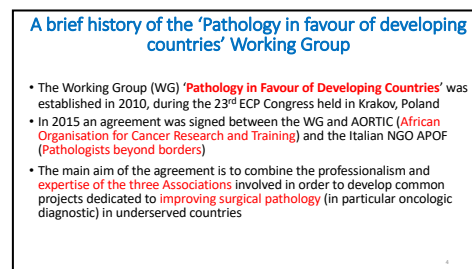
1



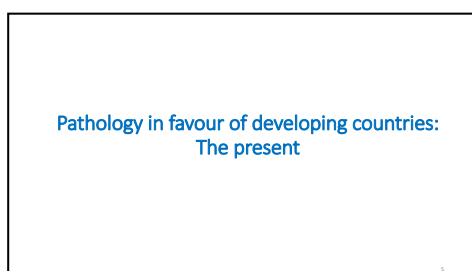
2



3



4





5



6

How ESP can help...

- ESP organises a wide series of **educational** and **scientific activities** (ECP, physical and virtual courses and webinars, virtual preceptorships, fellowships, pathology progress tests, etc.)
- **Pathologists located in underprivileged countries can benefit and participate in ESP activities**, thus accessing to resources and training possibilities not available in their own settings

7


Where are we now?

- This WG is currently formed of **63 members**, but we feel it is important to try to encourage more people to join and participate in our activities
- Our mission is to bring together people from any part of the world to work closely with the European Society of Pathology
- **Joining forces** and **sharing good practice** will be beneficial to all institutions, no matter where they are in the world and how wealthy they are
- It's not only about developing countries...

8

WG Recent activities: the 34th ECP

- For the 33rd ECP we organised a joint ESP National Societies (The National Polish Society of Pathology) & our WG named **'The beauty of budget pathology'**
- The session was chaired by Prof. Andrzej Marszalek, President of the Polish Society, and myself
- During this session, speakers from Tanzania, Poland and China shared their experience of diagnosing on a low budget
- The session was streamed and available for three months



9

Election of new Chair and Co-chair of the WG

- Chairs of the Working groups are elected by the members of the WG on a biennial basis. The Chair can be re-elected for a second term of 2 years and thus can serve as a rule for a 4-year term non-renewable
- The WG election can be conducted at the WG business meeting provided the number of the members participating in the meeting is at least 15
- The WG election can be decided by a simple majority of the voting members present at the business meeting. If there is no majority for one candidate, a second ballot will be held between those two candidates who have received the most votes in the first ballot

10

Nominees for Chair/co-Chair

1. Dr. Giulia De Falco
2. Dr. Katharina Wassilew

- Introduction of nominees (name, institute, speciality, current position, and their **perspective**)
- Election of Chair and co-Chair of the WG

11

Pathology in favour of developing countries: The future

12

Looking ahead: Scientific programme for the 35th ECP, Basel 2022

We submitted a request for three joint sessions and all were accepted

- 1. **Joint Short Course - Pathology in Favour of Developing Countries & Infectious Diseases & Molecular Pathology** WGs Topic: **COVID 19 in developing countries – another face of the pandemic**. Sunday, September 4th Afternoon session, 14:45 - 16:45
- 2. **Joint Symposium - Pathology in Favour of Developing Countries & Molecular Pathology** WGs Topic: **Molecular pathology on a budget**, Wednesday, September 7th 08:30 - 12:00 (09:30-10:30 - Coffee break & Posters)
- 3. **Joint Symposium: Pathology in Favour of Developing Countries & IT (Computational)** WGs Topic: **Joining forces! Improving diagnostic accuracy by telepathology**, Wednesday, September 7th 14:00 - 16:00

13

13

Joint Short Course - Pathology in Favour of Developing Countries & Infectious Diseases & Molecular Pathology WGs Topic: COVID 19 in developing countries – another face of the pandemic

- This joint session between our WG and the Infectious Diseases and Molecular pathology WGs will focus on the **impact COVID** had on different aspects, including education, access to treatments for unrelated diseases, mental wellbeing
- Speakers will join from different part of the world to share their experience
- Speakers from **China, Tanzania, India, UK** (from Public Health England) and **South Africa** have already confirmed their attendance and sent a preliminary topic

14

14

Joint Symposium - Pathology in Favour of Developing Countries & Molecular Pathology WGs Topic: Molecular pathology on a budget

- This joint session between our WG and the Molecular pathology WG will be focusing on sharing experiences on the challenges of performing molecular pathology when there is **lack of dedicated infrastructure or specialized health personnel**
- Speakers will join from different part of the world to share their experience
- Speakers from **Lebanon** and **Africa** have already confirmed their attendance and sent a preliminary topic

15

15

Joint Symposium: Pathology in Favour of Developing Countries & IT (Computational) WGs Topic: Joining forces! Improving diagnostic accuracy by telepathology

- This joint session between our WG and the IT (Computational) WG will shed light on the importance of joining forces to improve diagnostic accuracy, which is key in every worldwide institution
- Speakers will join from different part of the world to share their experience
- Speakers from **Portugal, Germany/Afghanistan, Sweden, Pakistan** and **Switzerland** have already confirmed their attendance and sent a preliminary topic

16

16

The future: Bringing more associations together

- We are currently in discussion with **Public Health England (PHE)**, a governative UK body, recently rebranded to better clarify its goals, as **UK Health Security Agency** and **Office for Health Improvement and Disparities**
- PHE's mission is '*to protect and improve the nation's health and to address inequalities*'
- This mission is not limited to UK only, but PHE aims at helping reducing disparities and inequalities in any sector/country



17

17

AOB

18

18

1/11/22

Questions?

19



Thank you,
merry
Christmas,
stay safe and
see you in
Basel

20