

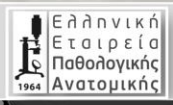


ESP is wishing a Happy
International Pathology day 2022 to
all!

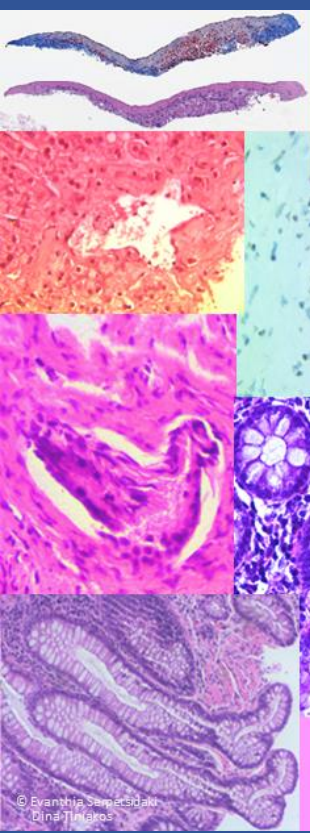


The great family of Pathology

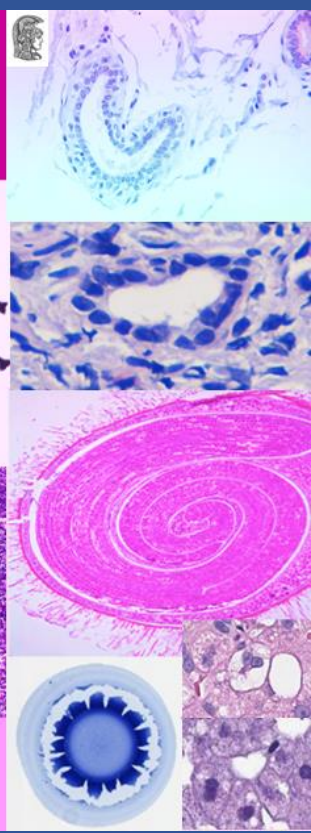
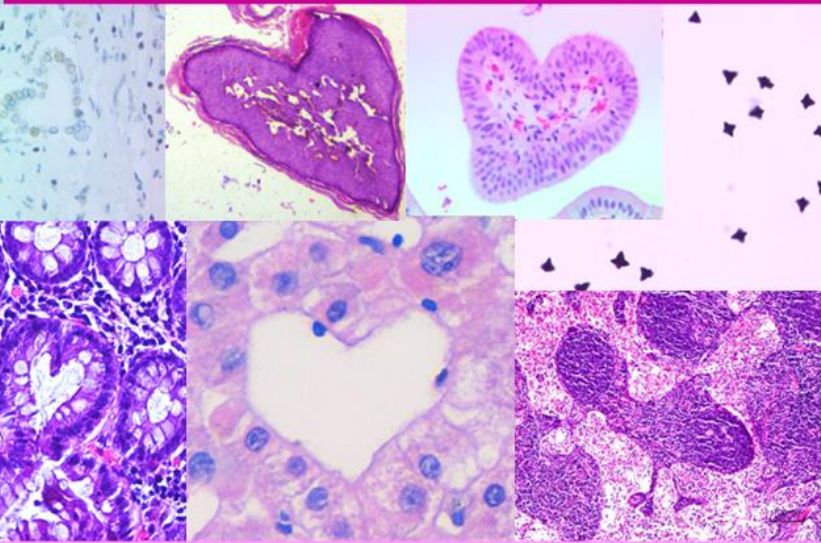
ff ff
"La Grande Famille",
René Magritte (1963)



INTERNATIONAL PATHOLOGY DAY
WEDNESDAY 9 NOVEMBER 2022



Pathology
In the **HEART** of prevention, diagnosis
and treatment



International Pathology Day
Wednesday 9 November 2022

© Evarnthia Serepisdaki
Dina Tiniakos

Dia Internacional da Anatomia Patológica

International Pathology Day

09 de Novembro de 2022



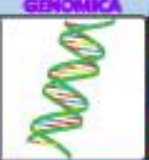
TECIDOS,
CÉLULAS E DNA
CIRCULANTE



MICROSCÓPIA



PROTEÓMICA



GENÓMICA



INTELIGÊNCIA
ARTIFICIAL

DIAGNÓSTICO DE PRECISÃO

TERAPÊUTICA CORRECTA E ATEMPADA
MAIS QUALIDADE DE VIDA
MAIS SAÚDE
MENOS EFEITOS SECUNDÁRIOS
MENOS TEMPO NO HOSPITAL



Líder no caminho para a
medicina de precisão!



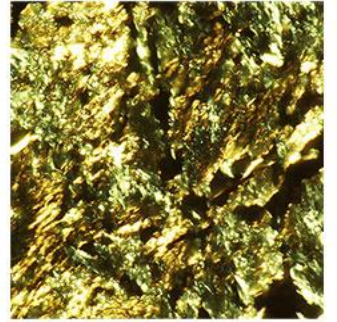
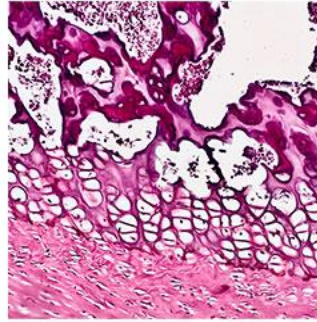
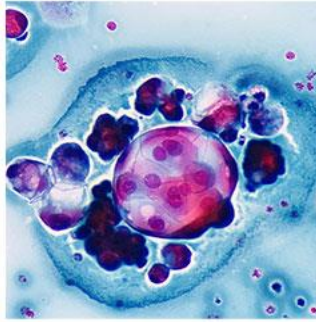
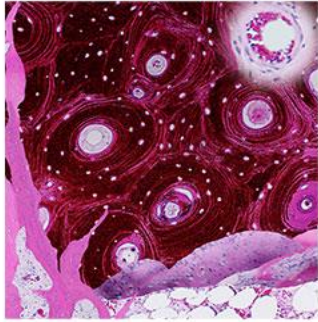
FINDING THE RIGHT PATH THROUGH THE COLORFUL WORLD OF DISEASES

A surgical procedure is never complete without pathological examination

Happy

INTERNATIONAL PATHOLOGY DAY

9 NOVEMBER 2022



HAPPY INTERNATIONAL PATHOLOGY DAY 2022

